



EQUITY PLAN 2020



Our Objectives

On May 19, 2021, the Granite Falls Board of Directors adopted a policy on Ensuring Educational Equity and passed the Resolution for Academic and Student Well Being. These items coupled with the equity tool help guide our decisions on a daily basis from within the boardroom to school classrooms and departments. The point is our use of the equity lens in all decisions we make.

Because of the compressed time frame to develop this plan, a large part of it is to "Plan to Plan" in the Fall of 2021 once all of our students are back full time. We will be selecting social-emotional screener to assess our students more formally, and we will administer diagnostic assessment data for learning using iReady. While our teachers have done outstanding work in remote and hybrid settings, there is a sense of not fully winnowing academic levels for are right now since the SBAC was not taken and iReady was completed while at home. The accuracy of in person learning will provide a more robust assessment of how students are doing emotionally and academically. In the meantime we are using classroom assessments to guide our summer '21 decisions: Expanded summer school for K-5 and 9-12 for those who are failing or have incomplete and summer school for our growing EL population will be provided. a

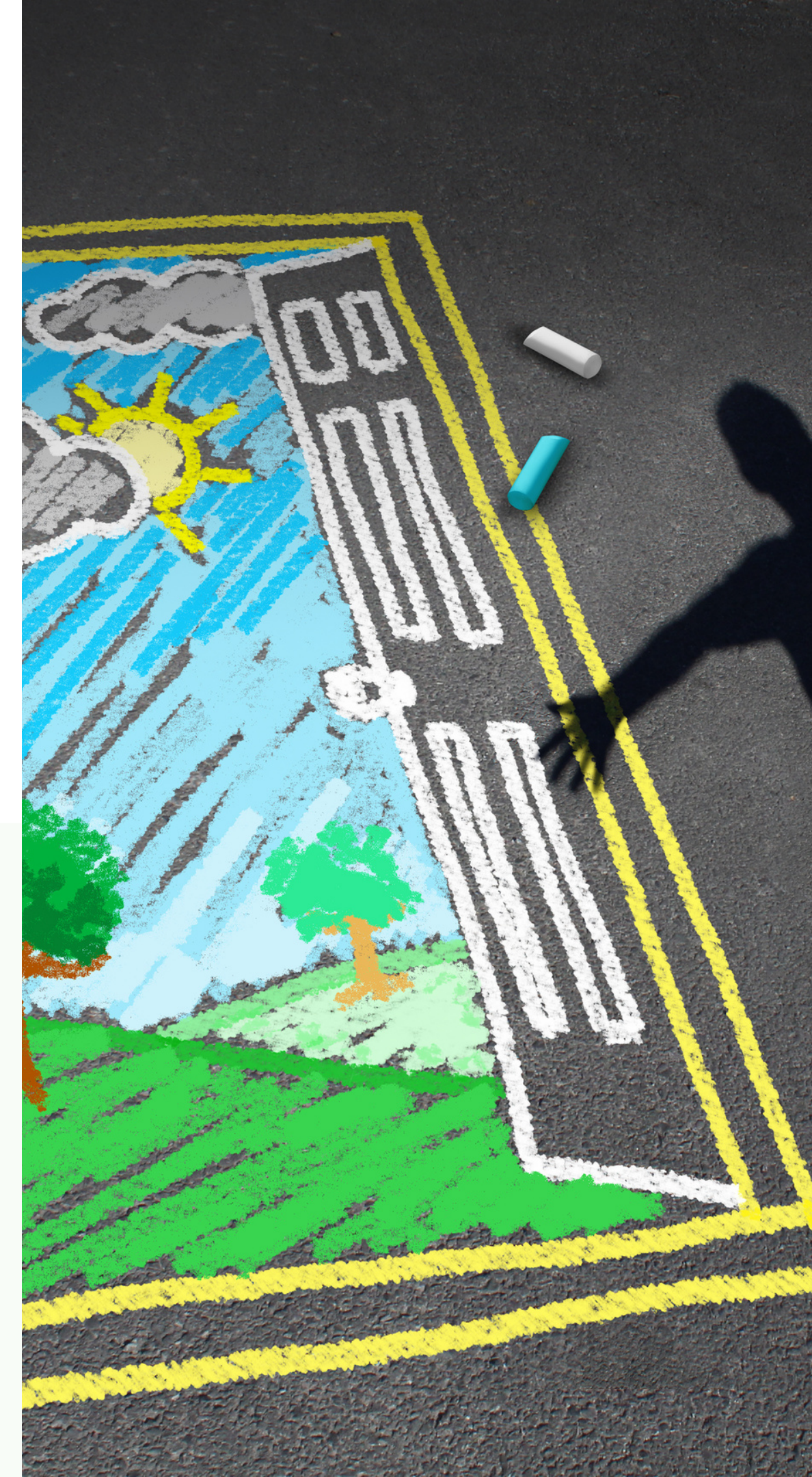
Summer School

- HS credit recovery and advancement - early summer
- Primary grades, including EL (grade level and students to be determined through iReady data analysis)



Summer Learning Opportunities

- Work with and advocate for public library summer reading program
- Open school libraries for access
- Provide two Chromebooks to library for Accelerated Reader program
- Provide opportunity for students to keep Chromebooks over summer for iReady, other resources provided by teachers





Social Emotional

- Extend counseling and caseworker work into summer
- Hire an elementary counselor so each school has a counselor
- In the fall provide a routine with clear guidance and expectations
- Use a screener in the fall to assess all students
- Continue work with University of Washington for 6-12 Forefront Suicide Prevention





School Year

- Extended hours for instruction at high schools for more opportunities of credit recovery/credit advancement
- Use screener: K-8 iReady; 9-12 classroom-based assessments and investigate other possible academic diagnostic tools for high school students



Equity and Equity Policy

- Use Granite Falls tool for equity analysis





Plan to Plan

8

- Spend significant time assessing students academic and well being upon return to school in Fall 2021

